

SHUANGHEXING

knitting machinery

泉州双合兴针织机械有限公司

Quanzhou Shuanghexing Knitting Machinery CO.,Ltd

地址：福建省泉州市洛江区河市镇溪浦工业区坑仔117号

ADD:No. 117, Xipu industrial zone, Heshi town, Luojiang district, Quanzhou city, Fujian province

POSTCODE : 362013

TEL : +0086 595- 22032395 /22032396 /22032397

FAX : +0086 595-22033393

Email : shuang-he-xing-8@vip.163.com

website: www.shuanghx.com



SHUANGHENG

knitting machinery



泉州双合兴针织机械有限公司，源于台湾，专业从事沉降片和针织大圆机零部件制造。自2002年以来，我们的产品远销国内各大城市及欧美、中东等国家和地区，并与国内外知名主机厂配套，深得国内外客户赞誉。SHX公司以提供精准耐用的产品为目标，并为客户提供定制的解决方案。我们将以优质的产品、合理的价格、真诚的服务与您共创未来，共图繁荣。



SHUANGHEXING

About us :

Quanzhou Shuanghexing(SHX) Knitting Machinery CO.,Ltd comes from Taiwan , specialized in sinkers and parts manufacturing for large circular knitting machines .since 2002 our products are sold to major cities in China, exported to Europe, America, the Middle East and other countries and regions in the world, at the same time, we built our high reputation by providing domestic and foreign well-known machinery factories with our products.SHX' s aims to supply accurate, durable products and to provide professional solutions to meet customers' needs. We will make a prosperous future together with high quality products, reasonable price and sincere service.





AT-F4S



AT-FLK



B51



BS-FLK-A



FYTB-8636



CM-FLK-B1



FH-FLK-A1



FH-FLK-C1



FKH-FLK-B3



FKH-FLK-B5



FKH-FLK-B13F2



FKH-FLK-B16



FY-FLK-A



FY-FLK-B



FY-FLK-B2



FY-FLK-C



FY-FLK-C1



FY-FLK-D



FYTA-8638



FYTB-8638



GC-F2-T



GD-FLK-T



LD-FLK-A1



LE-FLK-M



LE-FLK-M2



LYTB-8003



LYTB-8038



LZ-FLE-S



OT-FLK



PL-FLK-A



PL-FLK-B



SK-EDFJ-40-28A



TR-1045



TR-1072



TR-1074



TR-1094B



TR-1106



VIC-FLK-C



XH-F2-T



XY-FLK-A1



FLT-1034-B



FLT-8635



FYTB-8638C



FLY-WLK-A



FTD-1034



FTD-1034-A



FT3091A-1034



LKM-FLK(WH)



SHX-FLK-HL



SHX-FLK-PA



WL-FLK-A



FLK-W2



GC-F3



TR-1106



TR-1175



B52



A450



A-269



A-269A



A-269C



A-269P



BX-269



BX-SK



BX-ZS



EL-04



EL-06



F007-S34/RC2



M-N/A



M-R20



PL4-TRACK



PL-4R



SD-1.8A



SD-DM



SK-430-01



SK-615-01(PK)



SD-0.5*0.28



SD-0.30*0.15



SK-980-01



SK-980-B



SK-1021



SL-5784



ST-22A1HLCH



ST-22A1L



ST-22A3



ST-22A7L



ST-22ADL



ST-22ADS1



ST-22B1



ST-22HLB



ST-22HLB-S



ST-22HT



ST-22KT1



ST-22KTS



T-1.5



T-001



TC-500



TE-000



TE-20GG



TE-24



TE-100G



TEQ-01



TR-1012



TR-1013



KL-8352



905



904



TR-1039



TR-1041



TR-1042



TR-1043



TR-1046



TR-1047



TR-1049



TR-1051



TR-1055



TR-1056



TR-1064



TR-1065



TR-1066



TR-1067



TR-1069



TR-1070



TR-1077



TR-1080



TR-1081



TR-1161



TR-1082



TR-1083



TR-1084



TR-1088



TR-1089



WZ-03



WZ-5.5



WZ-6.0



WZ-6.5



XX-1.8A



09-102/25



A-269D



BX-G9



BYLB-8503



JS(JL)-22A2NR



KL-1137



SHX-3015A



SHX-SF



SK-615-PK-GC



SN-1-1



ST-22A7



ST-22ADS-L



TC-501



TZY-2.0



XL-22ST



XX-2.2



XX-2.2A



XX-2.8



ZB-SK-ED-A



SHX-3925



SHX-LY3020



SHX-CH-A



SHX-CH-B



SHX-930-PA



TR-1091



TR-1095



TR-1103



TR-1105



TR-1109



TR-1130



TR-1132



TR-1137



TR-1139



TR-1147



TR-1159



TR-1171



TR-1176



TR-1177



TR-1191



TR-1201



A-269N



ST-22NR



A-269SNR



ST-22ADS-L4



SHX-AI-H2.1



SHX-AI-H2.9



AT-R-2.8



AT-R-H3.5



AT-R-H2.9



C-2.9



CM-1.5A3T



AFT-R-1.8



AT-R-2.6



AT-R-2.8A



AT-R-H2.2



AT-R-H2.5



CM-1.8A3T



CM-2.0A3T



CM-2.2A3



CM-2.2A3T



CM-2.5A3T



CM-2.7A3T



CM-2.9A3T



CSD-001A



CSD-001B



CSD-001



CSD-2.0



CSD-002



CY-AR-2.5



CT-2.75B



CSD-003



CSD-0018A



CSD-3.2-1.5



CSD-004



CSD-0022A



CT-2.2



CSD-005



CT-2.75C



CY-AR-2.2



CSD-006



DHJ-01-PL



DHJ-02-PL



DHJ-03-PL



DHJ-05-PL



DU-2.9



ESW-3042



FKH-1.9K



FKH-2.2HX



FKH-2.2K



FKH-2.5HT



FKH-2.5HTA2



FKH-1.3



FKH-1.3B



FKH-1.5HT



FKH-1.5HT1



FKH-1.9



FKH-2.9HT-A



FKH-2.9HT



FKH-2.9K



FKH-3.5HY



FKM-1.3C



FKH-2.5KB



FKH-2.5K



FKH-2.7-2.9



FKH-2.7HT



FKH-2.7K



GD-2.2N



GD-2.5PKA



GD-2.5PKB



GD-2.7A



GD-2.7B



GD-2.0HS



GD-2.0PKA



GD-2.0PKA1



GD-2.0PKB



GD-2.0PKBA



GD-2.9C



GD-2.9C1



GD-2.9D



GD-2.9D1



GD-2.9E



GD-2.7C



GD-2.7D



GD-2.7N



GD-2.9A



GD-2.9B



GJT-1.5B2



GJT-1.8B2



GJT-2.0B2



GJT-2.2B2



GJT-2.5B2



GD-2.9N



GD-3.2HS



GD-3.3



GD-3.5PKA1



GD-3.5PKB1



HS-2.5B1



HS-2.5B2



HS-2.5P



HS-2.7



HS-2.9(GD-2.9HS)



H-1.3



H-2.2



H-2.5



HS-2.2



HS-2.5



HX-1.8-2.9A2



HX-2.0-3.6



HX-2.0-4.0



HY-1.5-3.5



JCH-2.2F



HS-2.9B2



HS-2.9P



HT-2.2



HTHI-4.0



HX-1.8-2.9



JCH-3.3



JCH-3.3A1



JCH-3.5



JCH-3.5A



JCH-3.5B



JCH-2.5F



JCH-2.7



JCH-2.7B



JCH-2.7FA



JCH-2.7F



JH-02



JH-2.7



JD-001



JD-285



JH-01



JCH-3.5C



JCH-C-0



JH-03



JH-03A



JHC-000



KL-2.9D



KLM-2.0



KLM-2.2



L-2.2



L-2.8



JM-2.7B1



JM-X-2.7B1



KA-112



KA-112B



KL-2.9



LE-2.9B1



T-1.2H
LKM-1.2H



LKM-1.2K



LKM-1.5F



LKM-1.5HT1



L-2.9



L-28



LE-2.2



LE-2.5



LE-2.9B



LKM-2.0F1



LKM-2.0H



LKM-2.0K



LKM-2.2



LKM-2.2F1



LKM-1.8



LKM-1.8F1



LKM-1.8HT



LKM-1.8K



LKM-2.0



LKM-2.5FB



LKM-2.5H



LKM-2.5HT



LKM-2.5K



LKM-2.7



LKM-2.2HT



LKM-2.2HT1



LKM-2.2K



LKM-2.5



LKM-2.5F1



LKM-3.2A



LKM-3.2F



LKM-3.5F1



LKM-3.5JT



LKM-3.5K



LKM-2.8K



LKM-2.9



LKM-2.9K



LKM-3.1K



LKM-3.2



LZ-2.8B



PL-2.5



PL-2.8



PL-FPB2-H-1.5V



PL-FPB2-H-1.9V



LKM-4.0A



LKM-5.0F



LKM-5.2K



LYJ-01



LZ-2.8A



SD23-1.2N02B



SD23-1.5N01A



SD23-1.5N02B



SD23-1.8N01A



SD23-1.8N01B



PW-3.0



RF-5.2



SD23-1.0N02B



SD23-1.2N01A



SD23-1.2N02B



SD23-2.2N01B



SD23-2.2N02B



SD23-2.5N01A



SD23-2.5N01B



SD23-2.5N02B



SD23-1.8N02A



SD23-1.8N02B



SD23-2.0N01A



SD23-2.0N02B



SD23-2.2N01A



SD-2.7N



SD-2.9



SD-2.9C



SD-2.9N



SD23-3.2N02B



SD23-2.7N02B



SD23-3.2N02B



SD-2.5



SD-2.5C



SD-2.7



SD-R-2.2A2



SD-R-2.8A2



SD-R-2.9A1



SD-R-2.9A2



SD-R-2.9A3



SD-H-2.5



SD-R-1.5A2



SD-R-1.5A2B



SD-R-1.8A2



SD-R-2.2A1



SD-R-3.5B1



T038-TR-03(2.5)



TF-B-4.0A



TF-C-3.0



TF-F-3.0A



SD-R-2.9B1



SD-R-2.9B2



SD-R-2.9C1



SD-R-2.75A1



SD-R-2.75B1



TR-1024



TR-1025



TR-1027



TR-1034



TR-1020



TH-25



TH-28



TR-2.5



TR-2.9



TR-1044



TR-1050



TR-1052



TR-1053



TR-1054



TR-1059



TR-1060



TR-1061



TR-1078



TR-1079



TR-1087



TR-1089



TY-2.7



TY-H



TY-H3.0



WCF-2.9



WR-2.0A



WR-2.0B



WR-2.5



WR-3.0A



WR-3.0B



WS-FB



WZ-2.0A



WZ-2.2A



WZ-2.9A



WZ-2.9B



WZ-5.2M



WZB-2.0



WZB-2.2



WZB-2.5



WZB-2.7



WZB-2.9



X-2.9A2



X-2.9B



X-2.9C



X-2.9D



XX-1.7-3.4



XX-2.5



YE-001



YE-002



YE-003



YTF-1.2A1



ZT-A-18-32



ZT-A-22



ZT-A-27A



ZT-A-27



ZT-A-31



ZT-R-2.7A



ZT-Y-2.2



ZT-Y-2.5



ZT-Y-2.5B



ZT-Y-2.6B



ZT-Y-2.6



ZT-Y-2.7



ZT-Y-2.9



ZT-Y-3.1



BL-5.0



BX-25-45A



BX-19-40A



BX-25-47A



BX-42A



BX-52-23



BXRJ2.5-5.0



BXRJ2.3-5.0B



BX-TJ3.3



BYP-2.2F



BX-TJ4.1



GC-T-1.5



HSFS0908



HT-A3T



KA-25



KA-285



KA-H1.5



KA-H3.5



KA-H3.8



KL-3.1



LE-2.2C



LKM-3.8K



PL-2.1



RH-R-2.5



RH-R-2.5A



RH-R-2.6



SD-2.0N



SD-2.5D



SD-H2.1



SD-H2.5



SD-H2.9



SD-HT



T038-T04M(1.5)



T038-TR-03(2.2)



T038-TR-03(2.5)



T038-TR-2.8



T038-TR-2.9



T038-TR-03(3.5)



T038-TR-5.0



TF-F-2.0A



XL-H1.5



XL-H1.8



XL-H1.8B



XL-H2.0



XL-H2.2



ZT-A-29



SD23-2.9N01A



LKM-1.5



YF-150512.2



T038-TR-03A(2.0)



TH-2.0



T038-TM3.5



T035-TR-03(1.8)



T038-TR-03A(2.5)



TE-H1.7B



T048-CT-40



T038-TR-03(2.0)



T038-TR-03A(2.8)



T038-TM1.5



CM-2.5A3TB



HT-SD1.8



JCH-2.5XL



JCH-3.7



TE-H1.2B



TH-2.8K



TR-1166RG



TE-H2.5B



HS-2.0



GD-2.0N



GD-2.5N



JD-2.0



JD-2.5



ZLH-PX-001

ZLH-PX-002



T038-TR-27-2.5/U-GC



HC-FH1C-4.2/2.5



JCH-4.6D



SD-R-2.5A3



STS00P9101



S05.19-H



TE-H1.8B



TE-H1.5B



TE-H1.81



TE-H2.7B



T038-TR-27-3.2/U-GC



FKH-3.2K



T038-TR-27-0



T038TR05(2.5)



JCH-3. 4



JCH-2.5F1



JCH-2.9F



JCH-2.5F2



JCH-2.8K



FKH-1.9K



FKH-3.2K



SHX-CZJ-01



S009TR10(2.5)



S009TR09(2.8)



SD-2.2N



SD-2.5N



DCH-H2.2



DCH-H2.5



LKM-DCH0



TR-1091



TR-1102



TR-1104



TR-1112



TR-1113



TR-1114 H1.8



TR-1115 H2.8



TR-1116 H3.5



TR-1117



TR-1120 H2.8



TR-1121 H2.5



TR-1123



TR-1125



TR-1126



TR-1127



TR-1133 H2.5



TR-1134



TR-1135 H2.5



TR-1141 H2.8



TR-1142 H1.8



TR-1143 H2.2



TR-1144 H1.8



TR-1145 H2.2



TR-1149



TR-1150



TR-1152



TR-1153



TR-1154



TR-1155



TR-1156



TR-1157



TR-1158



TR-1163 H2.2



TR-1166



TR-1166RG



TR-1173



TR-1179 H1.8



TR-1180 H2.8



TR-1182



TR-1183



TR-1184 H2.2



TR-1186 H4.5



TR-1187 H5.0



TR-1188 H3.5



TR-1193 H1.5



TR-1194 H1.8



TR-1196 H1.7



TR-1198 H1.8



TR-1202 H3.0



TF-002



FY-CJ4BD



V00-351076C



V00-BS-68



YY-002



TR-1124



TR-1131



A-3485



TR-1100



TR-1110



TR-1129A



LCX-Y-001



LCX-Y-002



LCX-Y-003



TF-T-003



TF-T-005



LCX-Y-004



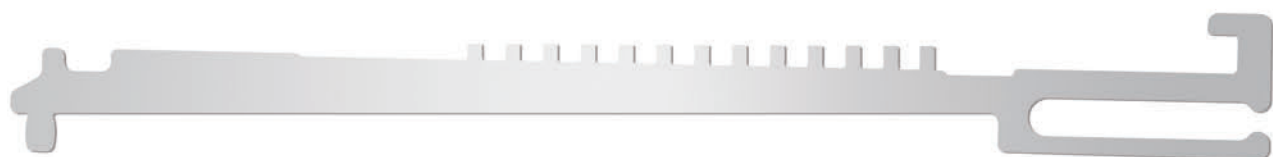
LCX-Y-005



TF-T12-001



BS-186-1



BS-8-001



PL-T-001



WC-T-1



WC-X-002



DP-20*30



DP-20*36



DP-U22*36



DP-20*50



DP-M22*36



DP-18*45



T-53A



LD-58



T-53B



YN-60



MD-53



MU-62



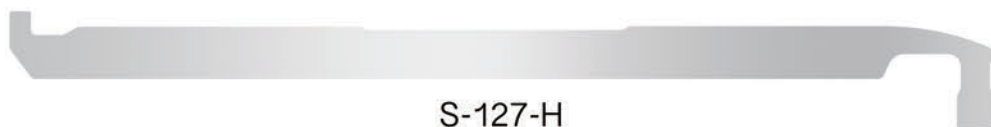
PT-107



TA-107N



S-127-L



S-127-H